



شركة نورة صالح بن علي المري للمقاولات

NOURA SALEH BIN ALI AL-MARRI CONTRACTING CO.

السجل التجاري: ٧٠٣٣٤٩٦٣٢٩، شارع الثامنة والثلاثون، حي المدينة، ص.ب ٣٣٢٦١، بقيق، الرقم الضريبي: ٣١١٧٨١٢٧٣٧٠٠٠٣
C.R. 7033496329, Thirty-Eighth Street, Al Madinah Dist, P.O. Box 33261, Abqaiq, VAT No.: 311781273700003

NOURA SALEH BIN ALI AL-MARRI CONTRACTING CO.

BUSINESS PROFILE



Call
+966 53 213 0714



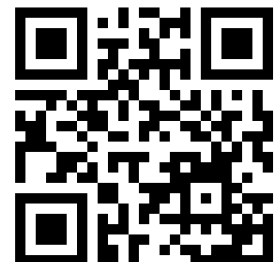
Email
info@nsm-sa.com



Website
www.nsm-sa.com



Address
Thirty Eight St, Al Madinah Dist, Abqaiq 33261, Saudi Arabia





ABOUT US

Noura Saleh Bin Ali Al-Marri Contracting Co. (NSM) is a Saudi Arabia-based company specializing in manpower supply and contracting services. The company supports a wide range of industries including construction, oil & gas, and industrial sectors by providing skilled, semi-skilled, and general workforce along with reliable project support solutions.

With a strong understanding of project demands and workforce management, NSM focuses on delivering efficient, timely, and cost-effective services. The company follows strict standards in quality, safety, and compliance, ensuring smooth execution of operations without unnecessary delays or complications.

Backed by experienced management and a dedicated workforce, NSM is committed to building long-term partnerships through trust, consistency, and dependable service delivery across every project.



MISSION

To provide skilled, reliable, and safety-focused manpower solutions that help clients achieve their project goals with efficiency, quality, and professionalism.



VISION

To be recognized as a leading manpower and contracting company, trusted for expertise, valued for people, and admired for building long-term partnerships that ensure sustainable success.

OUR OBJECTIVES



Deliver Skilled Workforce – We provide qualified manpower across multiple industries, ensuring the right people for the right job.



Build Long-Term Partnerships – Our focus is on trust, collaboration, and mutual growth with every client.



Ensure Safety & Compliance – Strict safety measures and compliance standards are maintained at every project site.



Promote Continuous Improvement – We invest in training, innovation, and skill development for better results.



Maintain Quality & Reliability – We deliver consistent, dependable, and timely services that clients can trust.



Support Sustainable Growth – We aim to contribute to the long-term success and sustainability of our clients' projects.



PREVIOUS PROJECTS



PROJECT NAME : Baker Hughes Plant

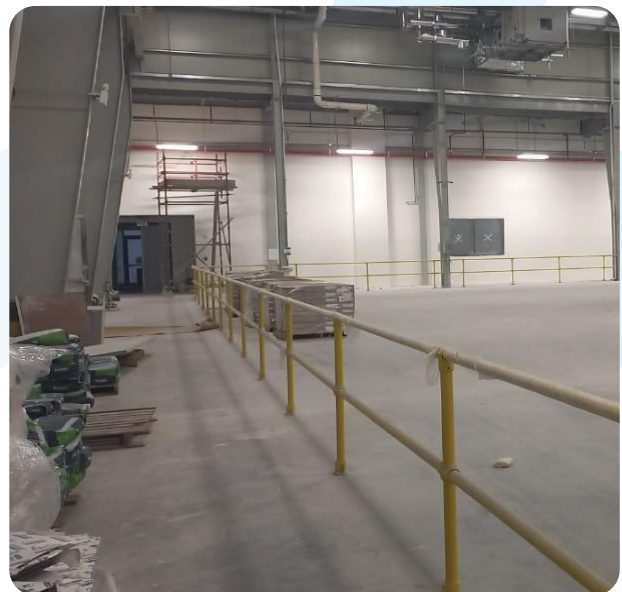
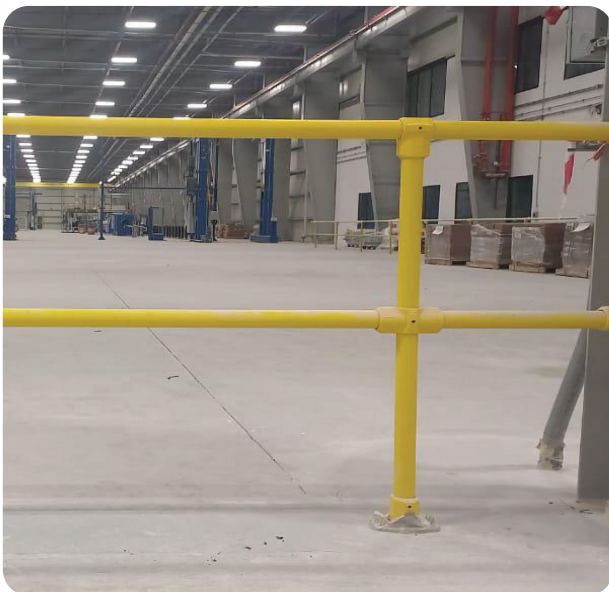
SCOPE OF WORKS : Design, Supply And Installation Of Non-Welded Handrails

CLIENT : Spark

LOCATION : King Salman Energy Park

PROJECT STATUS : Completed

PROGRESS : 100%



PREVIOUS PROJECTS



PROJECT NAME : Sindalah Island By Neom

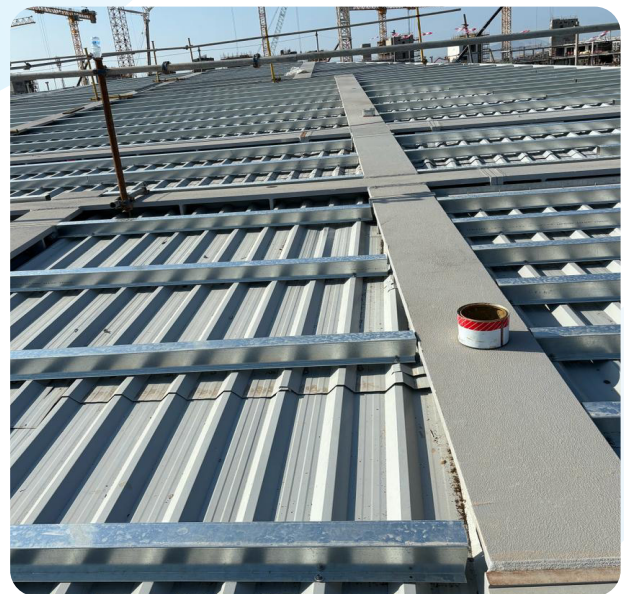
SCOPE OF WORKS : Supply And Installation Of Standing Seam System

CLIENT : Unitech Façade Engineering

LOCATION : Sindalah Island

PROJECT STATUS : Completed

PROGRESS : 100%



PREVIOUS PROJECTS



PROJECT NAME : King Abdullah University Of Science And Technology

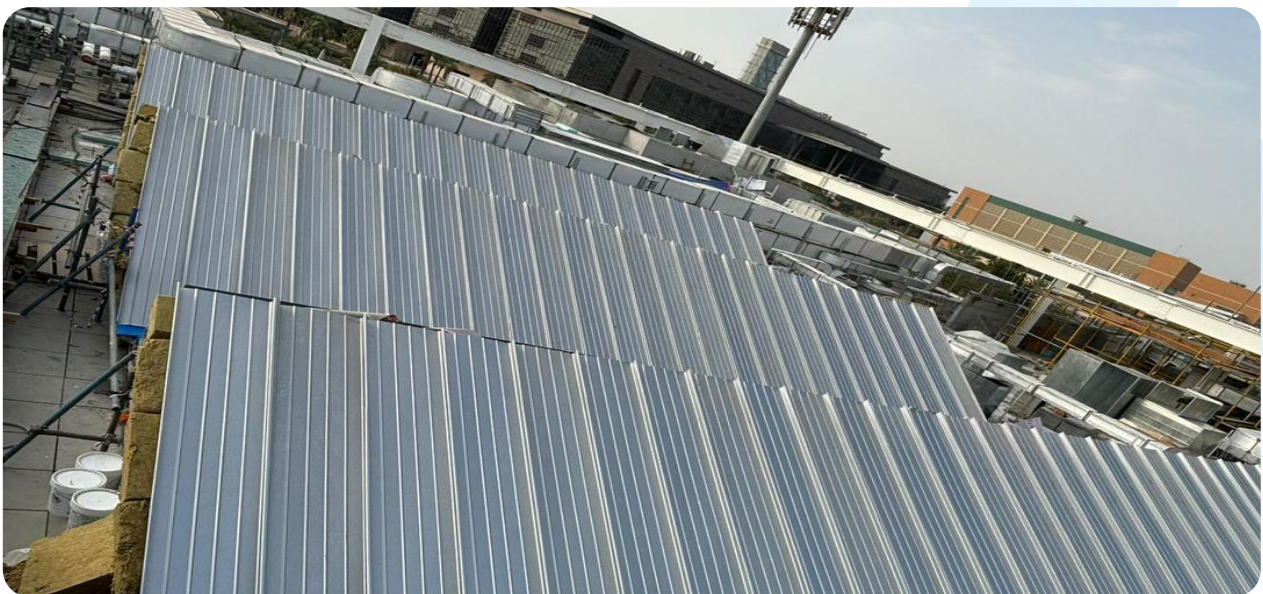
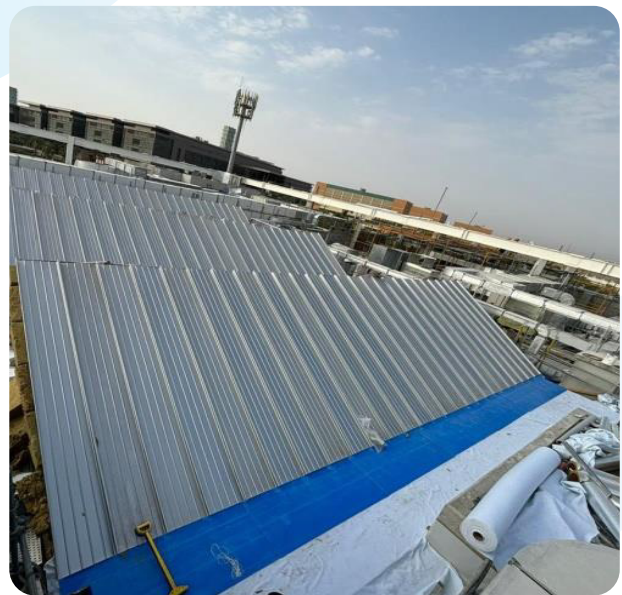
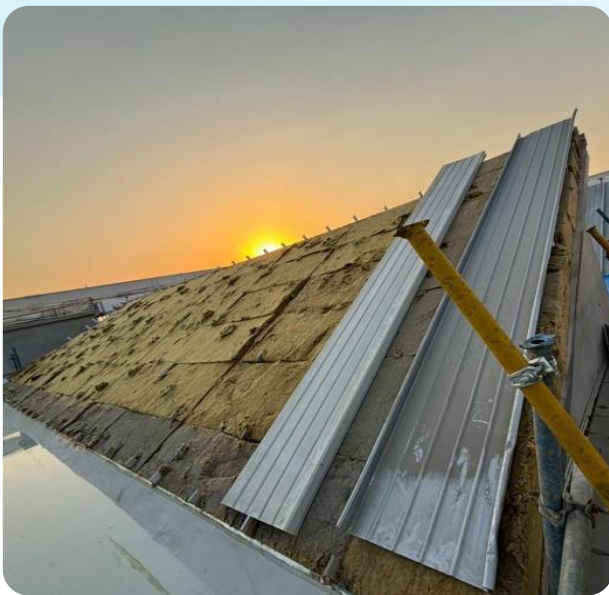
SCOPE OF WORKS : Design , Supply And Installation Of Standing Seam System

CLIENT : Alumco International

LOCATION : Kaust - Rabigh

PROJECT STATUS : Completed

PROGRESS : 100%



PREVIOUS PROJECTS



PROJECT NAME : Swcc Shuaiba 5 Desalination Project

SCOPE OF WORKS : Design ,Supply And Installation Of Welded & Non-Welded Handrails

CLIENT : Rawafid Industrial.

LOCATION : Al Shuaiba (Jeddah)

PROJECT STATUS : Completed

PROGRESS : 100%



PREVIOUS PROJECTS



PROJECT REFERENCE : Sindlah Island

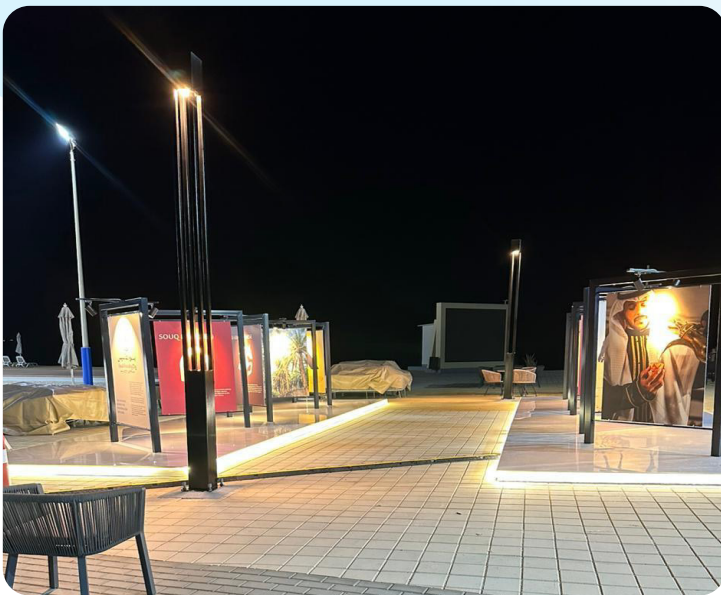
SCOPE OF WORKS : Supply And Installation Of Signboard, Frame ,Sticker And Lighting

CLIENT : ||

LOCATION : ||

PROJECT STATUS : ||

PROGRESS : ||



PREVIOUS PROJECTS



PROJECT NAME : KAEC

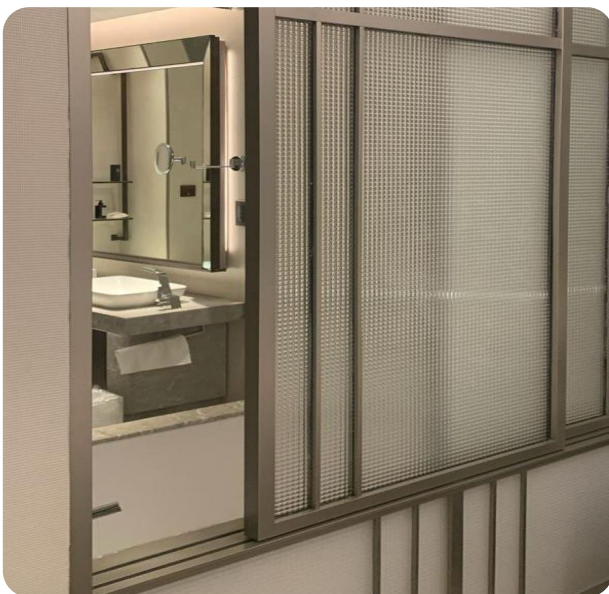
SCOPE OF WORKS : Installation Of Ceiling And Aluminium Glass

CLIENT : Above Horizon

LOCATION : King Abdullah Economic City

PROJECT STATUS : Completed

PROGRESS : 100%



PREVIOUS PROJECTS



PROJECT NAME : NEOM

SCOPE OF WORKS : Installation Gypsum Board 14000 Sqm

CLIENT : Advance Engineering Solution (Aes)

LOCATION : Sindlah Island

PROJECT STATUS : Completed

PROGRESS : 100%



PREVIOUS PROJECTS



PROJECT NAME : PRIVATE VILLA PROJECT

SCOPE OF WORKS : Complete villa project from civil construction to finishing works (including tiles and all other related tasks).

LOCATION : Akkik

PROJECT STATUS : Completed

PROGRESS : 100%



PREVIOUS PROJECTS



PROJECT NAME : STEEL STRUCTURE

SCOPE OF WORKS : Steel structure and sandwich panel installation

CLIENT : Saudi National Steel

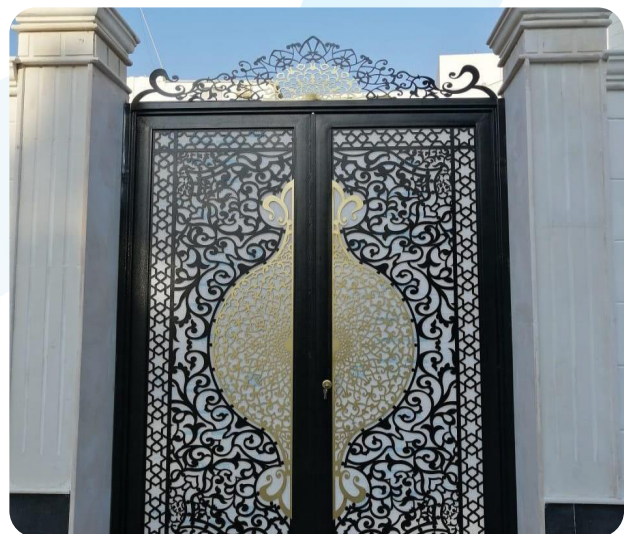
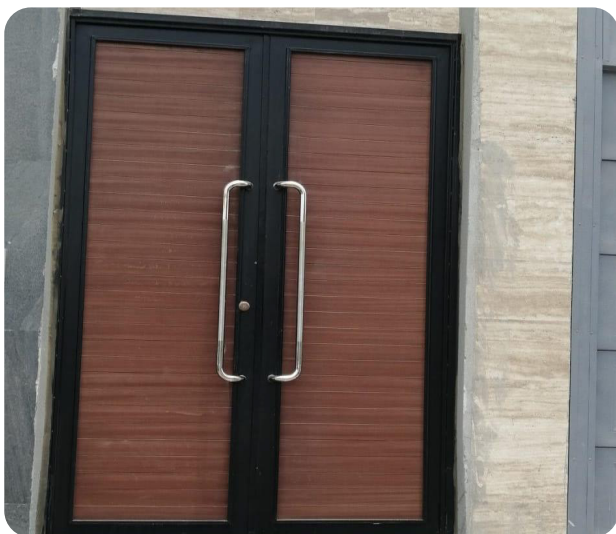
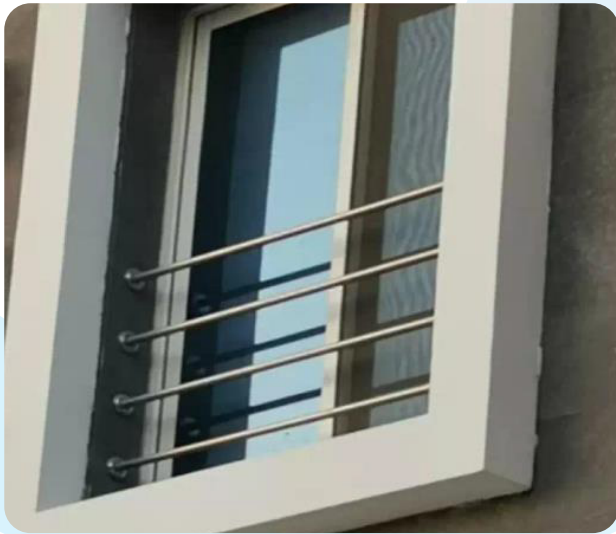
LOCATION : 2nd industrial city Dammam

PROJECT STATUS : Completed

PROGRESS : 100%



SOME OF OUR SMALL HOUSING PROJECT



SOME OF OUR SMALL HOUSING PROJECT





Equipment Rental Services

- » Cranes
- » Concrete Mixer
- » Bulldozers
- » Roller Compactor
- » Forklift
- » Welding Generator
- » Boom Truck
- » Manlift
- » Welding Machines
- » Dump Truck
- » Bus
- » Air Compressors
- » Wheel Loader
- » Trailer
- » Scaffolding Materials
- » Skid Loader
- » Mini Van
- » Painting Machine
- » Grading Machine
- » Tankers
- » Power Generators
- » Excavator
- » Pick-up
- » Tower Lights

OUR SERVICES



Fire Safety Works



Fire Alarm & Smoke Detector Installation



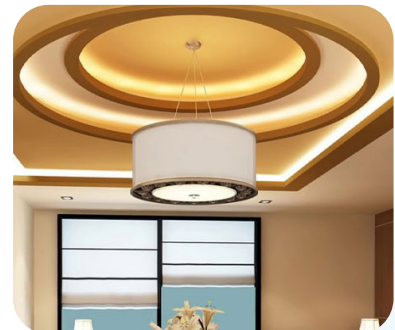
CCTV & Security Camera Solutions



Electrical Works



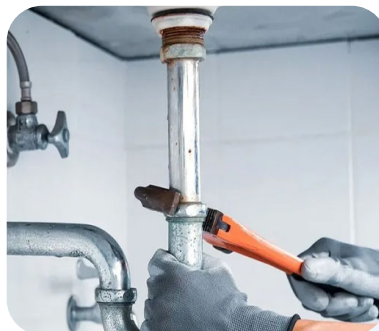
Glass Fitting Works



Gypsum Works



Carpentry Works



Plumbing Works



Welding Works



Scaffolding Services



Waste Removal & Site Cleaning Services



Construction Works

Manpower Supply Services

QA/QC PERSONAL

- » QC Manager
- » QC Supervisors (All Discipline)
- » QC Civil Inspector
- » QC Electrical Inspector
- » QC Instrument Inspector
- » E&I QC Inspector
- » QC Mechanical Inspector
- » QC Piping Inspectors
- » QC Plumbing Inspector
- » QC Welding Inspectors
- » QC HVAC Inspectors
- » QC Equipment Inspector
- » QC RTR Inspector
- » QC Painting and Coating Inspector
- » QC Telecom Inspector
- » QC Batch Plant Inspector
- » QC Material Receiving Inspector (All Discipline)
- » QC Scaffolding Inspector

OPERATORS

- » Care Operator
- » Fork Lift Operator
- » Excavator Operator
- » Boom Truck Operator
- » Manlift Operator
- » Heavy driver

ENGINEERS

- » Civil Engineer
- » Mechanical Engineer
- » Planning Engineer
- » Electrical Engineer
- » Instrument Engineer
- » Material Engineer
- » Safety Engineer
- » Safety Officer

Manpower Supply Services

SUPERVISORS

- » Civil Supervisor
- » Mechanical Supervisor
- » Electrical Supervisor
- » Piping Supervisor
- » Instrument Supervisor

RIGGERS

- » Level 1 Rigger
- » Level 2 Rigger
- » Level 3 Rigger

ELECTRO-MECHANICAL WORK FORCE

- » Electrical Technicians
- » Instrument Technicians
- » Electricians
- » Millwright Technicians
- » SS Welders
- » CS Welders
- » Multi Welders
- » Structural Fabricators
- » Piping Fabricators
- » Plumbers

CIVIL WORK FORCE

- » Carpenter
- » Steel Fixer
- » Scaffolder
- » Painter
- » Draft Man
- » Mason
- » Labors/Helpers

ADMINISTRATIVE STAFF

- » Executive Secretary
- » Document Controller
- » Site Admin
- » Time Keeper
- » WPR

Manpower Supply Services

SKILLED & GENERAL WORKFORCE

- » Labor
- » Steel Fixer
- » Mason
- » Mechanical Technician
- » Work Permit Receiver
- » Structure Fabricator
- » Forklift Operator
- » Gypsum Board Technician
- » Helper
- » Carpenter
- » Painter
- » Electrician
- » Welder – 3G
- » Light Driver
- » Fire Alarm Technician
- » Glass Installation Technician
- » Scaffolder
- » Plumber
- » Pipe Fitter
- » Safety Officer
- » Welder – 6G
- » Heavy Driver
- » CCTV Technician
- » Dewatering Pump Operator





Requirement Analysis

We clearly understand project scope, workforce needs, and client expectations before starting.



Planning & Resource Allocation

Proper planning is done to allocate the right manpower and resources based on project size and complexity.



Manpower Deployment

We provide skilled, semi-skilled, and general workers as required for smooth execution.



Supervision & Coordination

Our team ensures proper supervision and on-site coordination to maintain workflow efficiency.



Quality & Safety Control

Strict quality checks and safety standards are followed throughout the project.



Progress Monitoring

Regular monitoring is done to keep everything on track and avoid delays.



Timely Delivery

We ensure projects are completed on time with consistent and reliable performance.

WHY CHOOSE US



Skilled Workforce

Access to reliable and experienced manpower across multiple industries.



Industry Experience

Strong hands-on experience in manpower supply and contracting services.



On-Time Delivery

We focus on deadlines and deliver without unnecessary delays.



Quality Assurance

Maintaining high standards in every stage of work execution.



Safety Commitment

Following proper safety guidelines to ensure risk-free operations.



Flexible Solutions

Services are adapted based on client requirements and project needs.



Trusted Partnership

We aim for long-term relationships through consistent and dependable service.

CONCLUSION

Noura Saleh Bin Ali Al-Marri Contracting Co. (NSM) is a dependable partner in manpower supply and contracting services, known for delivering quality work on time and maintaining strong professional standards. With skilled resources and practical experience, the company supports projects efficiently while building long-term relationships based on trust and consistent performance.



CONTACT US

Phone

+966 53 213 0714

Email and Web

info@nsm-sa.com
www.nsm-sa.com

Address

Thirty Eight St, Al Madinah Dist,
Abqaiq 33261, Saudi Arabia